

inverters  
for arc welding and plasma cutting

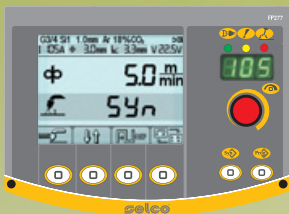
# Selco has been making inverters for 30 years

Selco has been designing, developing and producing inverters for arc welding applications for over 30 years. Our research facilities have developed superbly reliable and efficient welding systems incorporating innovative technical solutions, many of which are covered by international patents. Selco has also applied its vast expertise and practical experience to the development of welding control software that is efficient and precise in all working conditions. Ultra-high speed process control means superbly stable arcs and excellent quality welding.

*Genesis*  
**Welding Innovation**  
Efficiency & Technological Excellence



## iPanel



Genesis power sources are equipped with Selco **iPanel** control panels incorporating graphic displays and an intuitive user interface that are unique in their field.

## Robot Ready



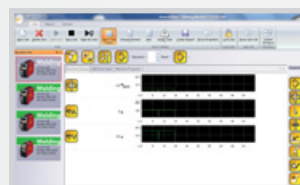
Selco Genesis can be used in automatic and/or robotised welding systems by installing the dedicating operating software. Selco's automatic welding power sources are complete with all the hardware and software components needed for use in any application.



## Green Welding

Genesis are equipped with **green@wave**® patented technology for extremely high efficiency in mains current absorption ( $PF \approx 1$ ), according to European Standard EN61000-3-12

## Weld@Net System



Selco's exclusive **Weld@net**® **Production Control Monitor** software lets you control a number of power sources simultaneously from your PC, as well as display and adjust all their welding parameters. **Weld@net**® **PCM** also lets you calculate and verify the quality and productivity of automatic and manual welding systems using an advanced production and cost reporting system.

# One technology two product lines

The key component in Selco's welding power sources is Selco's own, patented, **Multiline Three Level inverter**. This modern and technically advanced inverter delivers unbeatable performance and reliability over time. It also gives significant advantages in terms of arc control speed, complete function management, adaptability to different processes and applications, accuracy and repeatability. Selco inverter power sources are available in the **Quasar** and **Genesis** series, both offering the characteristics and performance needed to satisfy all industrial welding needs.



## Quasar

### Essential Welding

Robust and Easy to Use



Selco's vast experience and innovative technology make Quasar power sources robust, user friendly and technically advanced, with all the essential functions for efficient and continuous operation.

Selco carefully selects the most suitable designs and solutions for the work environment and uses only the toughest, self-extinguishing materials. Selco power sources therefore stand out for their light weight, advanced ergonomics and lasting resistance to corrosion.



## SELCO SHORT SPRAY MIG/MAG ARC WELDING

### Designed for amazing welding performance

Selco has developed a particularly efficient Short Spray MIG/MAG welding process. This new process gives extremely accurate welding results, uniform metallurgical characteristics and a visibly cleaner finish. Innovative in every way, the process even gives unique feedback in the form of a characteristic welding sound. The digital control of all welding parameters delivers advanced arc dynamics. Selco has also developed numerous functions for this new process, covering a wide range of specific welding applications.



## SELCO PULSED MIG/MAG

### A perfect weld thanks to "Digital Drop"

"Digital Drop" is the result of a long and complex Selco research programme, designed to develop a digital welding process based on the "one pulse / one drop" principle. Digital Drop technology represents a whole new approach to welding and guarantees consistent and repeatable performance in MIG/MAG applications. Selco power sources offer a large number of practical welding functions for this new process too, all selectable from the user menu.



## SELCO MULTIFUNCTION

### Welding for all situations

Selco was the first company to offer a choice of power sources capable of welding in all arc processes: MIG/MAG, TIG DC HF and electrode (MMA). Selco's vast experience in this field has since led to the development of a complete range of high-tech, multifunctional power sources. Selco's multifunctional power sources are highly practical solutions whenever welders have to use a number of different processes and therefore demand flexibility as well as high performance. They are also ideal for use by maintenance companies and in all schools and colleges that offer training courses in welding.



## SELCO TIG DC HF

### The precision of a job well done

Selco has extensive expertise in TIG welding and in the welding of noble metals like stainless steel. Thanks to this know-how, Selco has been able to develop an extremely clean TIG welding process capable of handling all sorts of application. The knowledge and creativity of Selco's designers and engineers have resulted in a wide range of useful functions for TIG welding too, giving users a step ahead.



## SELCO TIG AC/DC

### Simply the best

The level of excellence achieved by Selco in AC/DC welding is recognised and respected in all arc welding industry. Selco's TIG AC/DC welding sources are the result of extensive experience, a passion for new ideas, and commitment to continuous innovation in technology and metallurgy. Selco offers a wide range of AC/DC power sources, all with an impressive range of on-board welding functions.



## SELCO ELECTRODE WELDING

### Lightweight and versatile

Selco has brought innovation and advanced technology to traditional electrode welding processes too, enabling users to achieve first-rate results with standard and special electrodes thanks to intelligent functions like Hot Start and Arc Force.



## SELCO PLASMA CUTTING

### Powerful inverters for high speed cutting

Plasma cutting is an extremely efficient, simple and rapid way of cutting sheet metal and metal components. Selco offers a wide range of powerful, lightweight plasma cutters.





### QUASAR 320 SMC



320 A @ 45%  
3x400 V  
3 – 320 A  
33,0 Kg

### QUASAR 400 SMC



400 A @ 40%  
3x400 V  
3 – 400 A  
34,0 Kg

### QUASAR 320 MSE



320 A @ 50%  
3x400 V  
3 – 320 A  
20,2 Kg

### QUASAR 400 MSE



400 A @ 50%  
3x400 V  
3 – 400 A  
22,5 Kg

### QUASAR 500 MSE



500 A @ 50%  
3x400 V  
3 – 500 A  
27,3 Kg

**SIMPLE**  
easy  
to use

### QUASAR 180 TLH



170 A @ 45%  
1x230 V  
3 – 170 A  
8,4 Kg

### QUASAR 270 TLH



270 A @ 60%  
3x400 V  
3 – 270 A  
16,1 Kg

### QUASAR 320 TLH



320 A @ 60%  
3x400 V  
3 – 320 A  
20,5 Kg

### QUASAR 400 TLH



400 A @ 50%  
3x400 V  
3 – 400 A  
22,5 Kg

### QUASAR 150



150 A @ 35%  
1x230 V  
5 – 150 A  
4,1 Kg

### QUASAR 180



170 A @ 35%  
1x230 V  
3 – 170 A  
8,0 Kg

### QUASAR 220 / 220 RC



220 A @ 30%  
3x400 V  
3 – 220 A  
11,3 Kg

### QUASAR 270 / 270 RC



270 A @ 40%  
3x400 V  
3 – 270 A  
16,1 Kg

### QUASAR 350 / 350 RC



350 A @ 40%  
3x400 V  
3 – 350 A  
16,5 Kg

### QUASAR 35



35 A @ 40%  
1x230 V  
20 – 35 A  
8,4 Kg

MIG/MAG

PULSED MIG/MAG

MULTIFUNCTION

TIG DC HF

TIG AC/DC

MMA

PLASMA

### GENESIS 2200 SMC

220 A @ 35%  
1x230 V  
3 – 220 A  
22,0 Kg



### GENESIS 2700 SMC

270 A @ 45%  
3x230 - 400 V  
3 – 270 A  
23,0 Kg



### GENESIS 2200 PMC

220 A @ 35%  
1x230 V  
3 – 220 A  
22,0 Kg



### GENESIS 2700 PMC

270 A @ 45%  
3x230 - 400 V  
3 – 270 A  
23,0 Kg



### GENESIS 2200 MTE

220 A @ 35%  
1x230 V  
3 – 220 A  
22,5 Kg



### GENESIS 2700 MTE

270 A @ 45%  
3x230 - 400 V  
3 – 270 A  
23,5 Kg



### GENESIS 1500 TLH

150 A @ 30%  
1x230 V  
5 – 150 A  
3,9 Kg



### GENESIS 1800 TLH

180 A @ 35%  
1x115 - 230 V  
3 – 180 A  
9,4 Kg



### GENESIS 200 TLH

200 A @ 40%  
1x230 V  
6 – 200 A  
16,0 Kg



### GENESIS 2700 TLH

270 A @ 35%  
3x230 - 400V  
3 – 270 A  
18,8 Kg



### GENESIS 1700 AC/DC

170 A @ 35%  
1x115 - 230 V  
3 – 170 A  
18,8 Kg



### GENESIS 2200 AC/DC

220 A @ 35%  
1x115 - 230 V  
3 – 220 A  
18,8 Kg



### GENESIS 2700 AC/DC

270 A @ 40%  
3x230 - 400V  
3 – 270 A  
27,0 Kg



### GENESIS 1300 / 1500 / 1500 RC

150 A @ 30%  
1x230 V  
5 – 150 A  
2,6 Kg



### GENESIS 1800 RC

170 A @ 35%  
1x115 - 230 V  
3 – 170 A  
9,0 Kg



### GENESIS 2200 RC

220 A @ 40%  
1x230 - 400 / 3x230 - 400V  
3 – 220 A  
10,5 Kg



### GENESIS 40

40 A @ 40%  
1x115 - 230 V  
20 – 40 A  
11,0 Kg



### GENESIS 60

60 A @ 60%  
3x400V  
22 – 60 A  
19,0 Kg



### GENESIS 90

90 A @ 60%  
3x400V  
22 – 90 A  
25,0 Kg



**GENESIS 3000 SMC**

300 A @ 40%  
3x230 - 400 V  
3 - 300 A  
32,0 Kg

**GENESIS 3200 MSE**

320 A @ 50%  
3x230 - 400 V  
3 - 320 A  
27,6 Kg

**GENESIS 4000 MSE**

400 A @ 60%  
3x230 - 400 V  
3 - 400 A  
36,2 Kg

**GENESIS 5000 MSE**

500 A @ 50%  
3x230 - 400 V  
3 - 500 A  
38,5 Kg

**GENESIS 3000 PMC**

300 A @ 40%  
3x230 - 400 V  
3 - 300 A  
32,0 Kg

**GENESIS 3200 PME**

320 A @ 50%  
3x230 - 400 V  
3 - 320 A  
27,6 Kg

**GENESIS 4000 PME**

400 A @ 60%  
3x230 - 400 V  
3 - 400 A  
36,2 Kg

**GENESIS 5000 PME**

500 A @ 50%  
3x230 - 400 V  
3 - 500 A  
38,5 Kg

**GENESIS 3000 MTE**

300 A @ 40%  
3x230 - 400 V  
3 - 300 A  
32,0 Kg

**GENESIS 3200 GSM**

320 A @ 50%  
3x230 - 400 V  
3 - 320 A  
27,6 Kg

**GENESIS 4000 GSM**

400 A @ 60%  
3x230 - 400 V  
3 - 400 A  
37,5 Kg

**GENESIS 5000 GSM**

500 A @ 50%  
3x230 - 400 V  
3 - 500 A  
39,5 Kg

**GENESIS 3200 TLH**

320 A @ 40%  
3x230 - 400 V  
3 - 320 A  
26,0 Kg

**GENESIS 4000 TLH**

400 A @ 60%  
3x230 - 400 V  
3 - 400 A  
35,4 Kg

**GENESIS 5000 TLH**

500 A @ 50%  
3x230 - 400 V  
3 - 500 A  
37,3 Kg

**GENESIS 3200 AC/DC**

320 A @ 40%  
3x230 - 400 V  
3 - 320 A  
27,5 Kg

**GENESIS 4000 AC/DC**

400 A @ 40%  
3x230 - 400 V  
3 - 400 A  
35,4 Kg

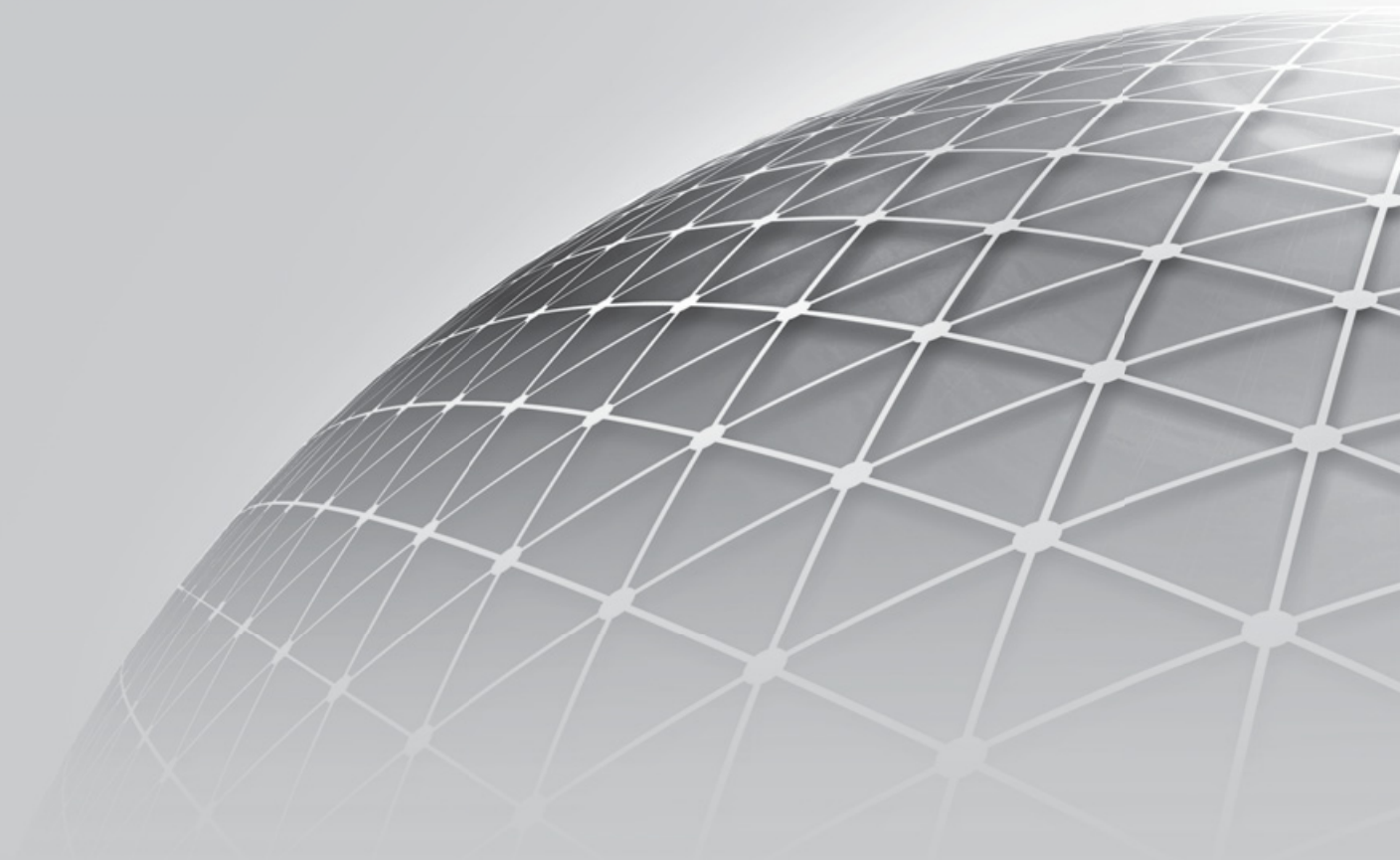
**GENESIS 5000 AC/DC**

500 A @ 45%  
3x230 - 400 V  
3 - 500 A  
37,3 Kg

**GENESIS 503 CLS**

500 A @ 50%  
3x400 V  
6 - 500 A  
40,0 Kg





cod. 90.08.17901



SELCO s.r.l.

Via Palladio, 19 - 35019 Onara di Tombolo (Padova) ITALY  
Tel. +39 049 9413111 - Fax +39 049 9413311  
[selco@selcoweld.com](mailto:selco@selcoweld.com) - [selcoweld.com](http://selcoweld.com)